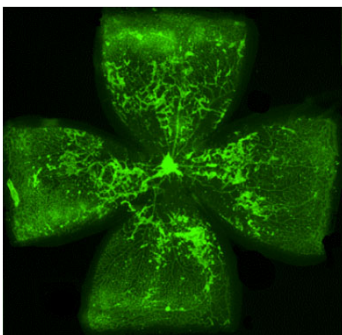


## Oxygen-Induced Retinopathy Model (Mouse)

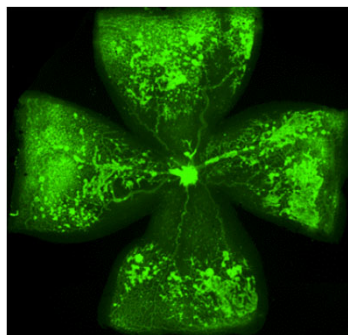
We offer a validated, reproducible, and cost-effective preclinical model of oxygen-induced retinopathy (OIR) in mice.

### OIR Model Advantages:

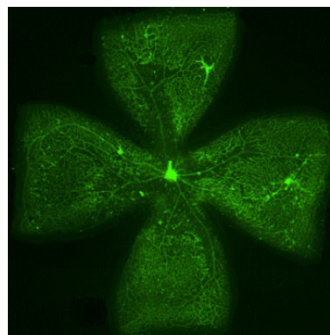
- ✓ Provides robust framework for evaluating inhibition of pathological neovascularization
- ✓ Quantitative assessment through evaluation of signal intensity from flatmount images
- ✓ Conducive to transgenic studies



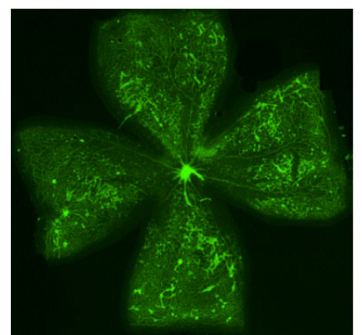
Eylea®



Placebo



Test Article 1



Test Article 2

Endpoints can include (but are not limited to): slit lamp biomicroscopy and indirect ophthalmoscopy, high resolution fundus imaging, tonometry, pachymetry, pupilometry, fluorescein angiography, optical coherence tomography, electroretinography, flat mounts, and histopathology.

*And many other offerings tailored to your needs...*

---

### Our Team

**Studies are led by our specialized team with decades of experience-**

Dr. David Culp, Director of Research, and Dr. Brian Gilger, Board-Certified Veterinary Ophthalmologist

### Contact Us

Phone: 919-433-2206 | Email: [jduvall@poweredresearch.com](mailto:jduvall@poweredresearch.com) | Web: [www.poweredresearch.com](http://www.poweredresearch.com)